

TRUKKSIDÉ
08/11/19
BANDSTÁL
NEPTUN TECOFA
RK G

SJOAPPKABÁGO



SJOAPPKABÁGO

SÁME LÁHKÁNGUVDÁSJ
NASJONALT SENTER FOR SAMISK I OPPLÆRINGA



4+



+



SJOAPPKABÁGO

SJOAPPKABÁGO

SÁME LÁHKÁNGUVDÁSJ
NASJONALT SENTER FOR SAMISK I OPPLÆRINGA



SJOAPPKABÁGO



SJOAPPKABÁGO

Kártå biejaduvvi gábbmot bievde nali.

Máná vuoroj milta áhtsi guokta kártå majs ádá bágov máhtti dahkat, duola dagu bádne-dáktår, skirri-biesse, máhttá aj kártájt sægodit ja gæhttalit ádá bágojt dahkat. Sjaddi gus alma bágo vaj sjaddi gus suohtas bágo, duola dagu tjiebet-biesse, skirri-tjávda?

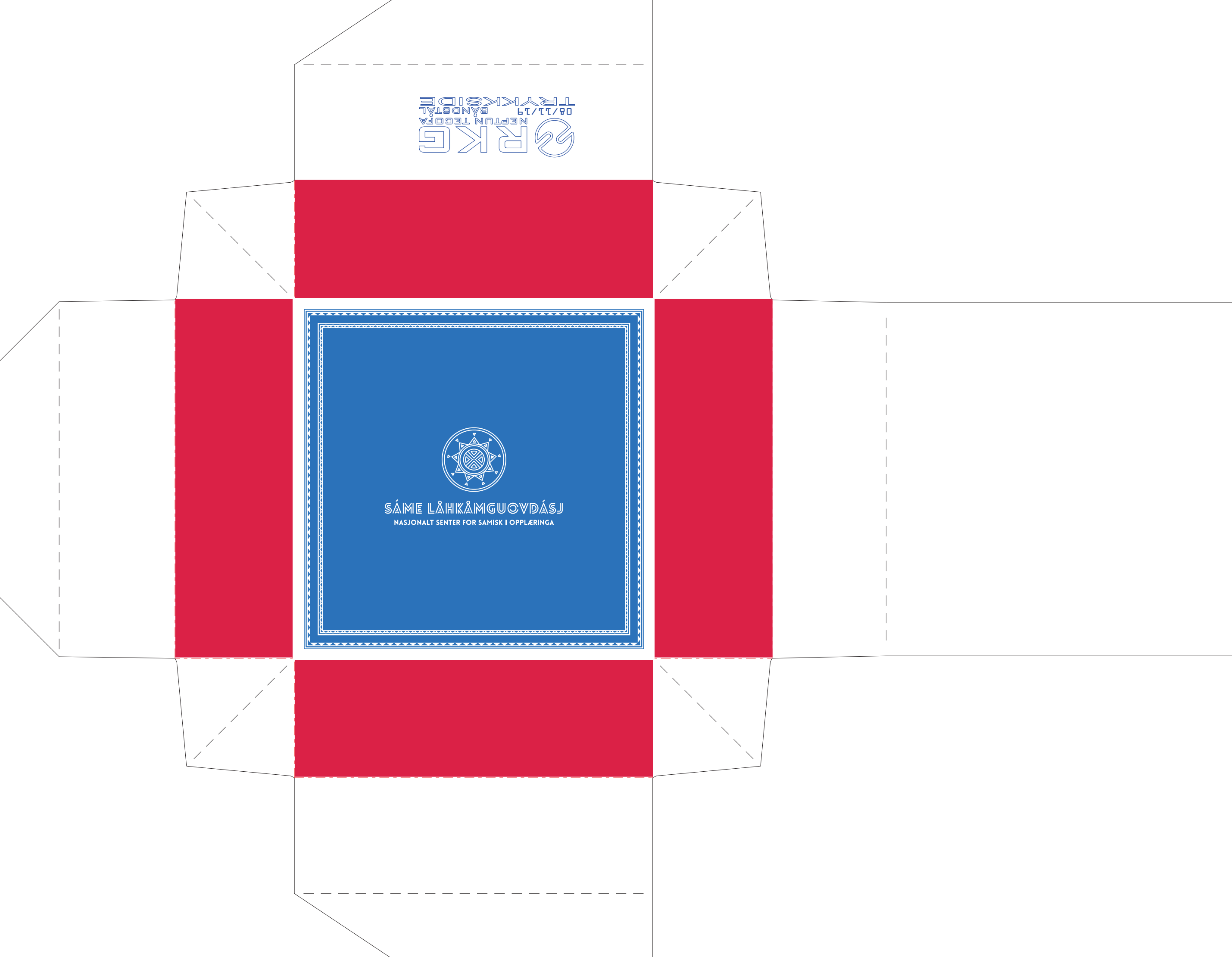
Uimme: Mánájda áhpádit guovtet bágos máhttá ietjá bágov dahkat.

lohkanguovddas.no

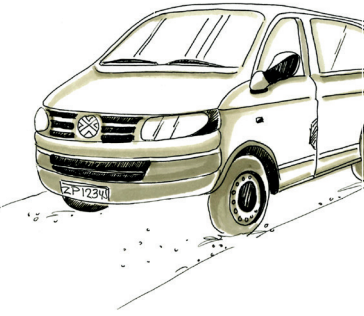


SÁME LÁHKÁNGUVDÁSJ
NASJONALT SENTER FOR SAMISK I OPPLÆRINGA

TRUKKSIDEN
08/11/19
BANDSTÅL
NEPTUN TECOFA
RKG



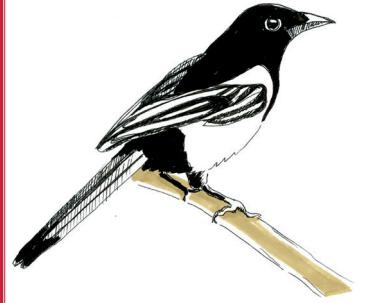
SÁME LÁHKÁMGUOVDÁSJ
NASJONALT SENTER FOR SAMISK I OPPLÆRINGA



BIJLLA



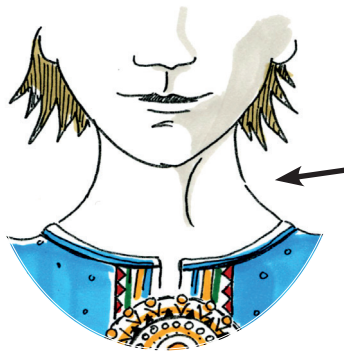
TJÁVDA



SKIRRI



BIESSE



TJIEBET



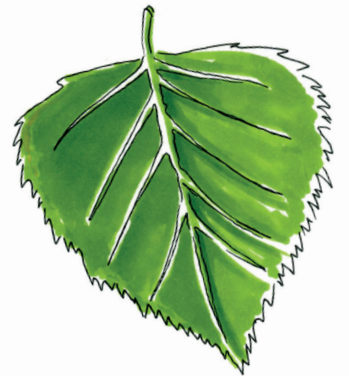
LIJNNE



SUORMMA

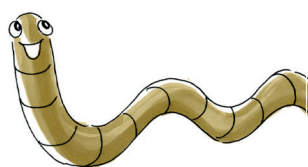


GOAhte

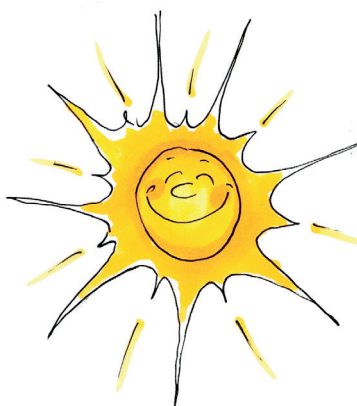


LASSTA

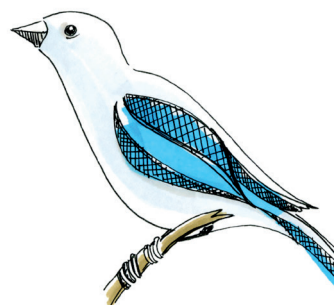




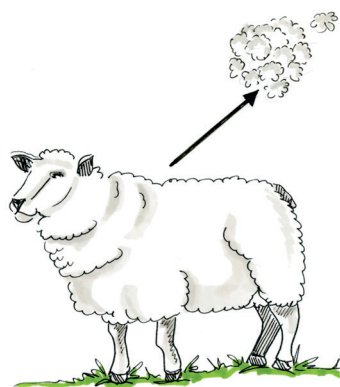
MÁDO



BIEJVVE



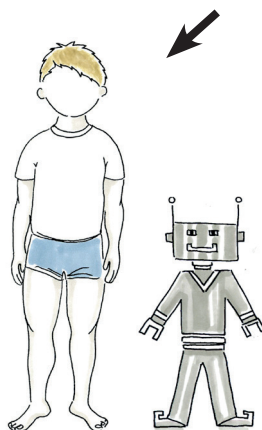
LÅDDE



HULLO



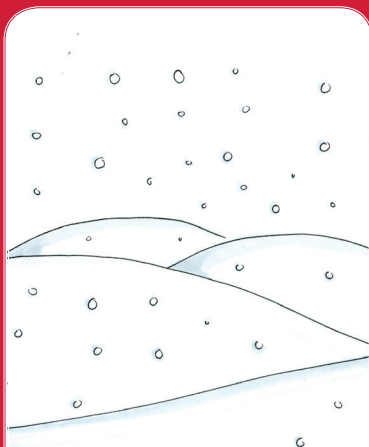
LIJNNE



ULMUSJ



BÁDNE



MUOHTA

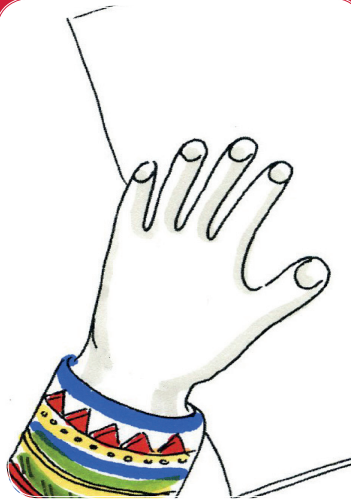


TJALMME





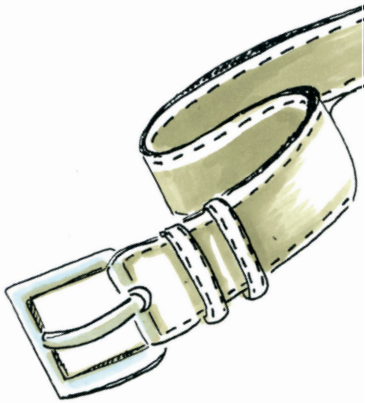
DÅKTÅR



GIEHTA



BÁDDE



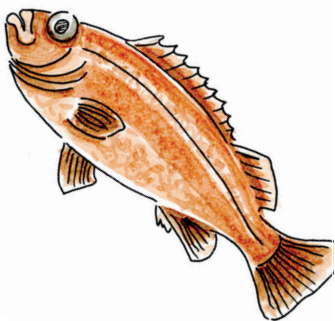
GETSAM



GLÁSA



RÁJGGE



GUOLLE



GÁHKKO

Sjoappkabágo

Tjávda - rájgge
Skirri - biesse
Tjiejbet - lijnne
Suormma - goahte
Lassta - mádo
Biejvve - ládde
Hullo - lijnne
Muhta - ulmusj
Bádne - dåktår
Giehta - bádde
Bijlla - getsam
Tjalmme - glása
Guolle - gáhkko

